



## **Karinya point Cook encourages a six star energy rating for all homes on the estate.**

Here are some ideas to get you thinking about the way you leave your mark on the environment. Each of these projects can be easily carried out on an existing house, not necessarily during the time of construction or renovation.

### **Solar energy**

By using solar energy we are less reliant on non-renewable fossil fuels and simply harvest the renewable energy from the sun. A solar energy system is generally connected to the grid so the energy produced is sold to the grid for a one for one basis, offsetting your energy bill.

**D.I.Y rating: requires an approved supplier and installer**



### **Washing machine**

Replace an older washing machine with a more water-efficient model. It can be as simple as switching from a top loader to a front loading machine.

**D.I.Y rating: easy**

### **Solar and heat pump hot water**

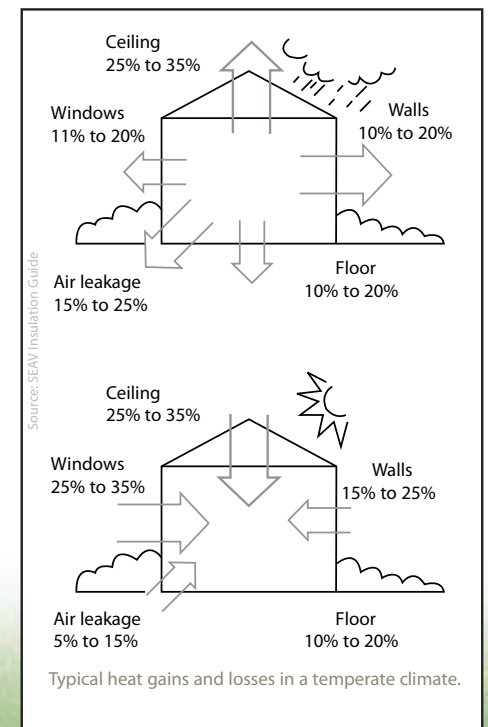
The most energy efficient hot water system is a solar model with a natural gas heat top-up. An electric heating pump acts as back-up. It works like a fridge in reverse and can be up to 70 per cent more efficient than a traditional electric water heater.

**D.I.Y rating: requires an electrician and plumber**

### **Thermal insulation**

With 30 per cent of all heat loss from the house escaping through the ceiling, insulation is important. There are a couple of types of insulation; polyester batts are similar to traditional fiberglass batts but safer and easier to install. Foiled air pocket insulation is like bubble wrap with foil on the outside.

**D.I.Y rating: medium to difficult**



[www.karinyapointcook.com.au](http://www.karinyapointcook.com.au)



### Rainwater tanks

We are all familiar with rainwater tanks used for watering the garden but if you want to take it one step further, have your rainwater tank installed so the collected water can be used within the house.

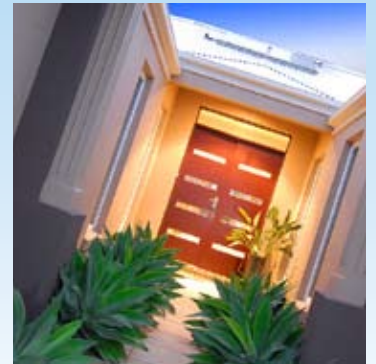
**D.I.Y rating: requires a licensed plumber for connection to the house**



### Gardening

Use plants that are native to your area, which means they will adapt quickly to their surroundings and require less water, fertiliser and pesticides. Some councils offer cheap or free native plants to encourage people to grow them.

**D.I.Y rating: easy**



### Drip Irrigation

Instead of wasting litres of water by watering your garden with a hose, install a drip irrigation system that delivers moisture directly to plant roots where they need it most. Less water is lost through evaporation and less water is required.

**D.I.Y rating: easy to medium**

### Glazing

Glazing has a major impact on the energy efficiency of the building envelope. Poorly designed windows, skylights and glazed surfaces can make your home too hot or too cold. If designed correctly, they'll help maintain year-round comfort, reducing or eliminating the need for artificial heating and cooling.

**D.I.Y rating: medium to difficult may require a glass installer**



### Some more simple tips to follow for a greener household:

- ✓ Check energy ratings on appliances
- ✓ Install water saving taps and shower heads
- ✓ Seal drafts under doors and windows to reduce heat consumption
- ✓ Use cross flow ventilation rather than air conditioning
- ✓ Use ammonia or pure soap in the kitchen and laundry so water can be used directly on the garden
- ✓ Have recycling bins of different colours to encourage the practice
- ✓ Compost your kitchen scraps

**[www.karinyapointcook.com.au](http://www.karinyapointcook.com.au)**

This document has been prepared with all reasonable care and thought, however no warranty is given. Site, market and authority conditions may result in changes to these lots without notice. These specifications may change and the developer takes no responsibility for incorrect sizes, specifications and measurements. Prospective purchasers are advised to carry out their own investigation in order to satisfy themselves as to all aspects of the development. All copy illustrations, images, photographs and artist impressions are depicted and impressions for presentation purposes.